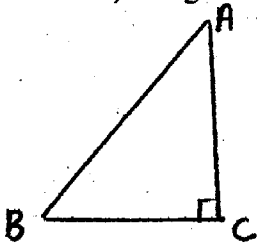
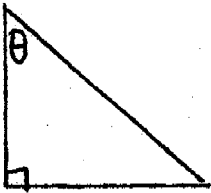


12. a) Using the triangle below, write the three primary trigonometric ratios for  $\angle B$ .

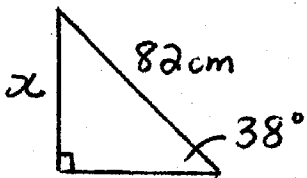


b) Using the triangle below, write the three primary trigonometric ratios for  $\theta$ .

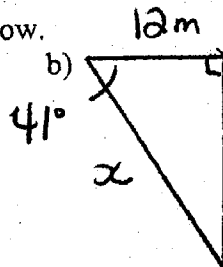


13. Use trigonometry to solve for  $x$  in the diagrams below.

a)



b)



14. a) Use trigonometry to solve for the  $\angle A$  in the diagram below to the nearest degree.

