

9. Factor the following.

a) $3x^2 - 18x^3 + 9x$

b) $21mn^3 + 7m^2n^2 - 14mn^4$

c) $x^2 - 36$

d) $9x^2 - 16$

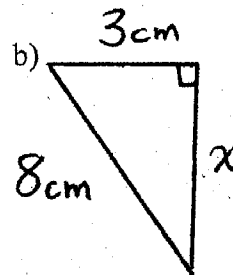
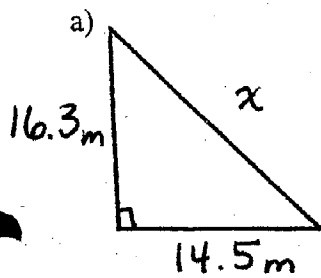
e) $25 - p^2$

f) $x^2 - 6x - 16$

g) $x^2 - 5x + 6$

h) $m^2 - m - 30$

10. Solve for the unknown side using the Pythagorean Theorem.



11. State which triangles are similar and prove your claim. Then use the properties of similar triangles to determine the unknown values.

